

INNOSILICON

S11 USER MANUAL



Table of Contents

1. OVERVIEW	1
2. ASSEMBLE THE MINER	2
2.1 Check the miner before power on	2
2.2 Connect the PSU	3
2.3 Connect the Ethernet Cable	3
3. OPERATE THE MINER	4
3.1 Enter the miner console	4
3.2 Set up the pool	4
3.3 Check the hashrate of the miner	5
3.4 Network configuration	5
3.5 Other pages	6
3.5.1 Overview	6
3.5.2 Upgrade	6
3.5.3 Modify the password	7
3.5.4 Reboot	7
3.5.5 Factory reset	7

1. OVERVIEW



Part Number	S11
Algorithm	Blake2b
Hash Rate	4.3Th/s (+-8%)
Power	1380W +/-8%
Size (LxWxH)	(L)290mm*(W)130mm*(H)155mm
Net Weight	3.7KG (without PSU)
Operating Temperature	0-40 ℃
Required rated PSU	1600W or above, 10 * PCI-E 6Pin
Network Connection	Ethernet

2. ASSEMBLE THE MINER

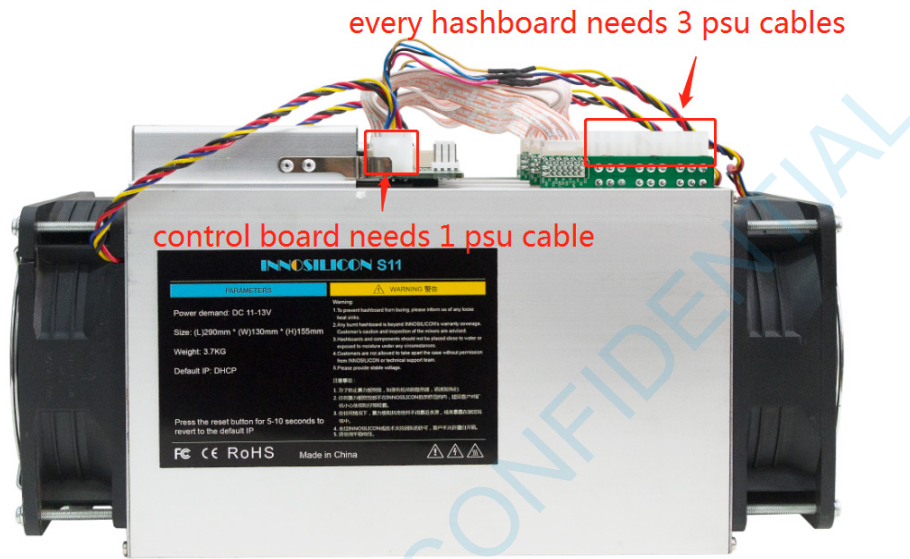
2.1 CHECK THE MINER BEFORE POWER ON

- Check the warranty sticker is well or not, especially the hashboards PSU port side. If the warranty sticker is damaged when you received the miner, please contact our After-sales.
- Before you power on the miner, shake the miner softly, if you can hear the sound of metal banging on metal, please contact our After-sales.
- Check if the fan work well, if you find the fans broken please contact our After-sales.
- Check the cable connection, if it is different from below picture, please connect the cables as below.



2.2 CONNECT THE PSU

Every hash board needs to be inserted with 3 PSU cables, controller only needs 1 PSU cable according to the following image .



2.3 CONNECT THE ETHERNET CABLE

Insert one end of the Ethernet cable into the router and the other end into the slot shown in the following image, you should plug in the miner one by one, only when you have accomplished IP Setting of the previous one you can plug in another miner .



IP SET button: Press it more than 5 seconds to recover the IP to 192.168.1.25

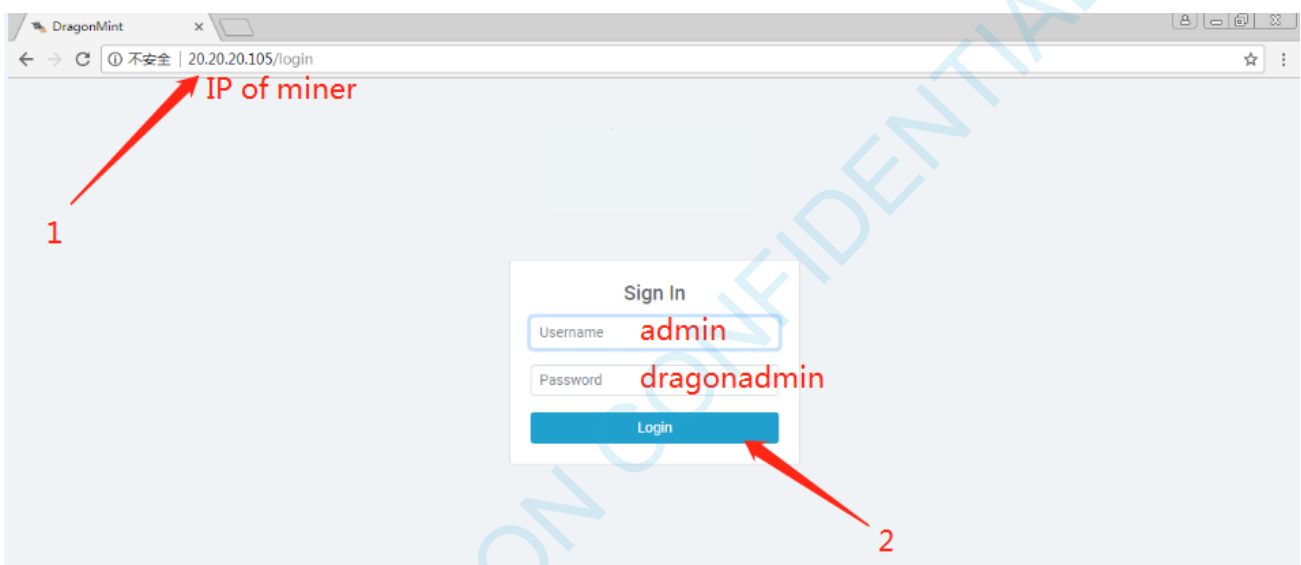
Press it more than 20 seconds to switch the Dynamic (Static) IP to Static (Dynamic) 4.

RESET button: Your miner will restart if you press it. It wont recover your settings to the default.

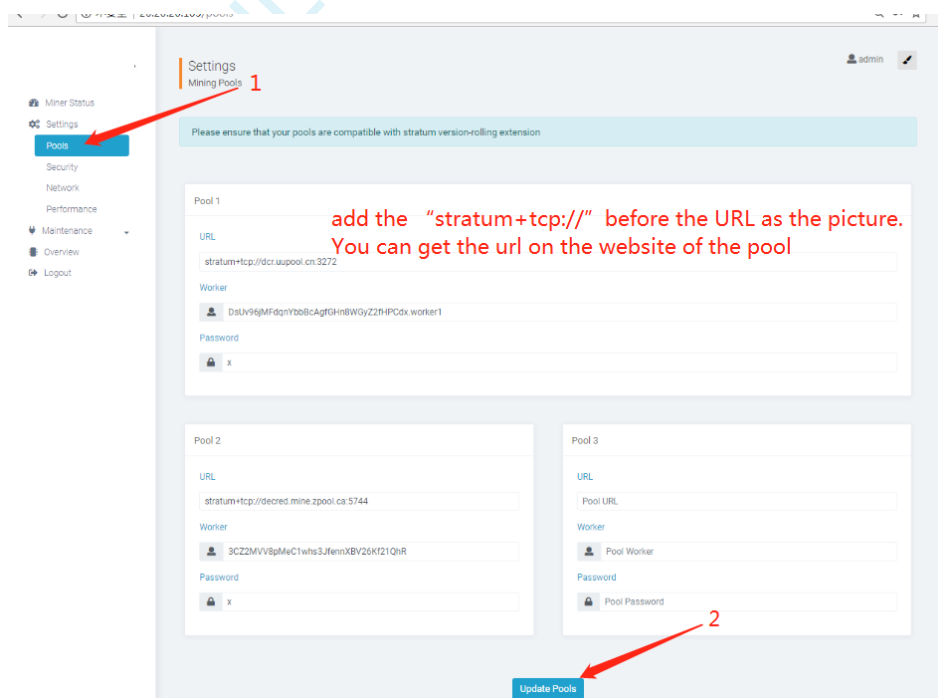
3. OPERATE THE MINER

3.1 ENTER THE MINER CONSOLE

DHCP(the Normal led on the control board should be blinking) is the default IP mode of the miner, find the IP via the router or the IP scanner. Enter the IP of the miner on the browser and press the Enter button. The chrome is the suggested browser.

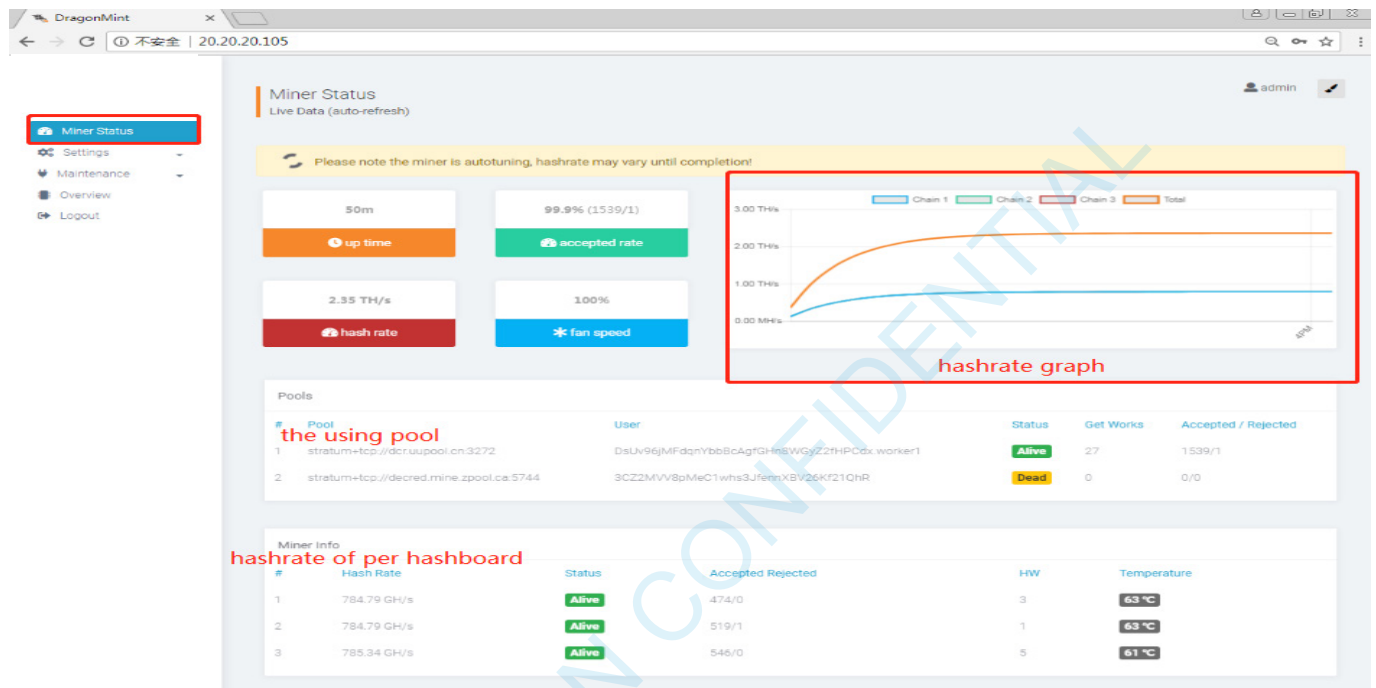


3.2 SET UP THE POOL



3.3 CHECK THE HASHRATE OF THE MINER

After set up the pool, the miner will mine for you.

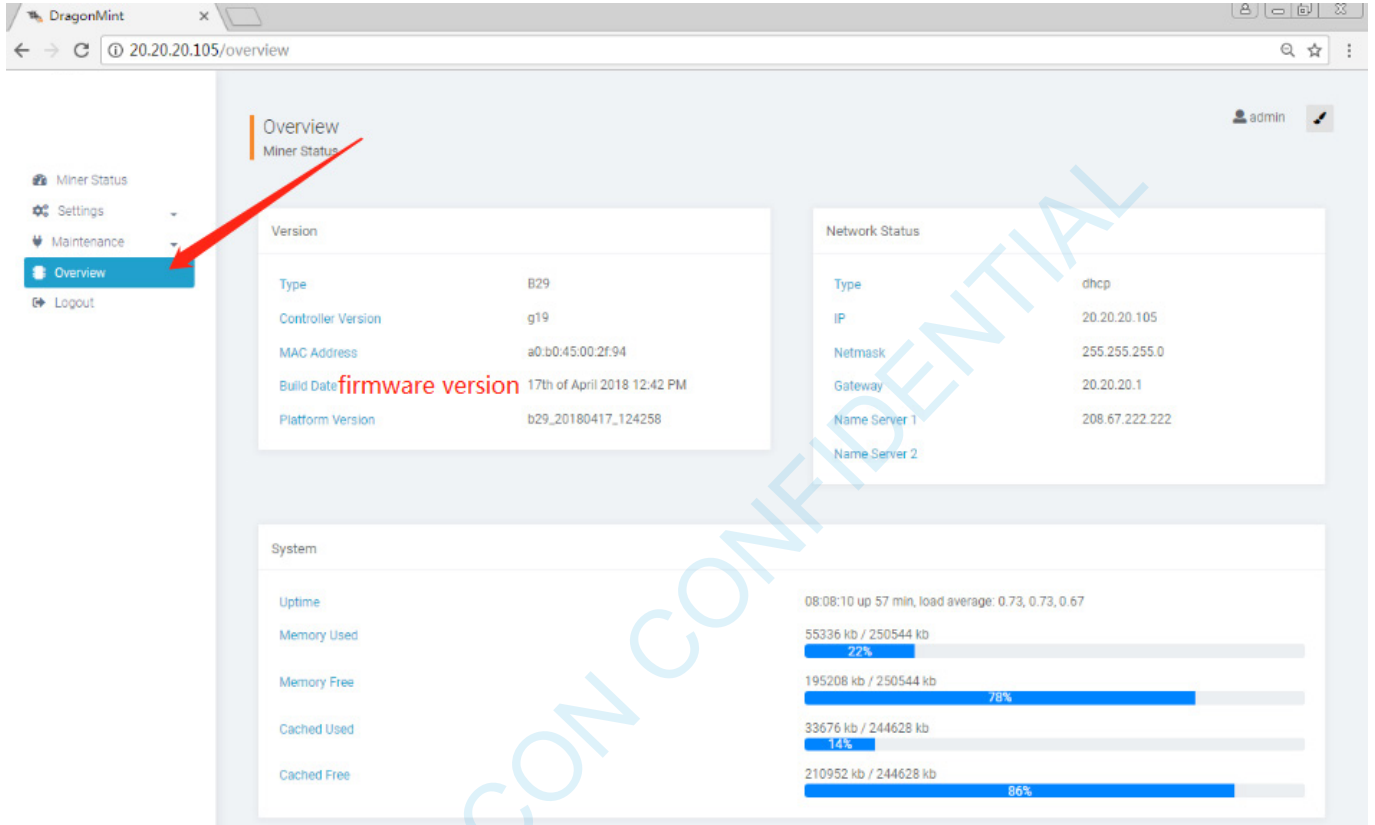


3.4 NETWORK CONFIGURATION

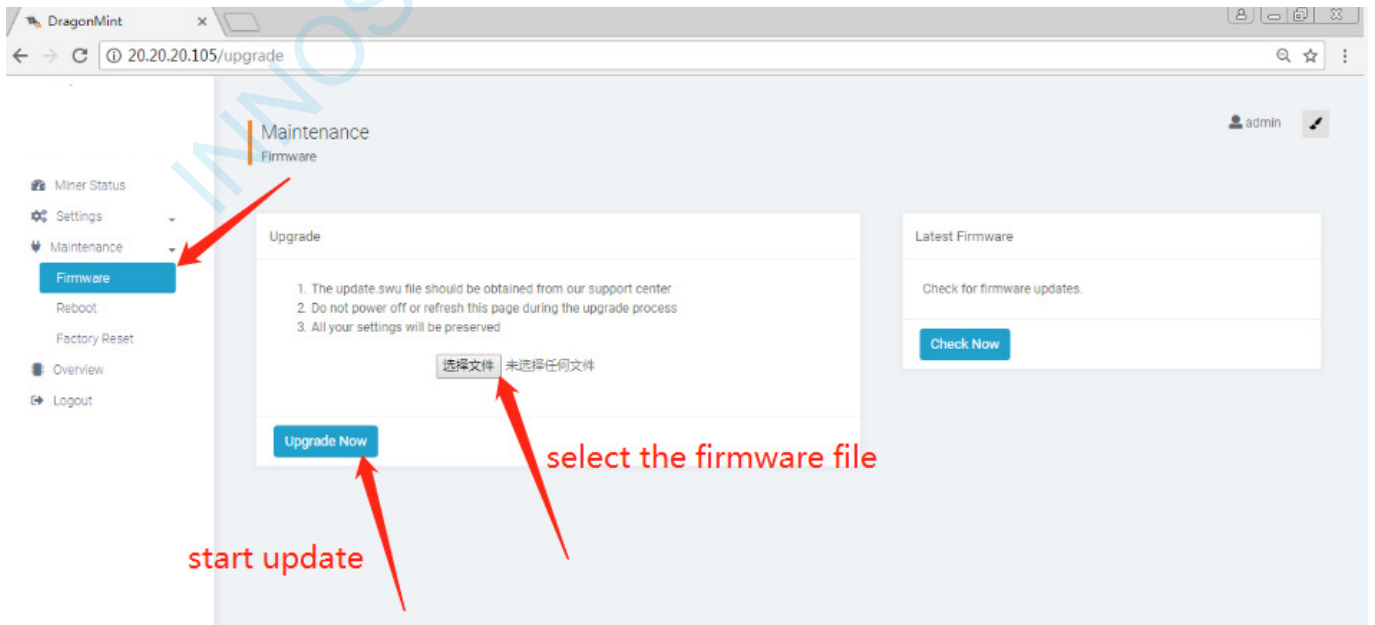


3.5 OTHER PAGES

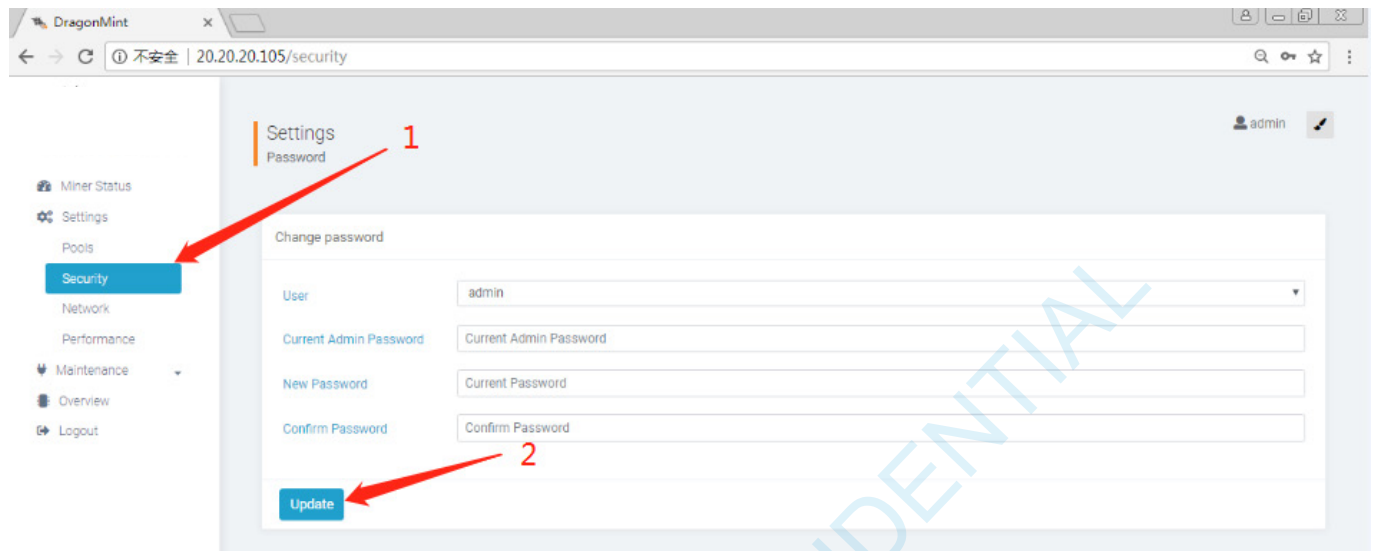
3.5.1 OVERVIEW



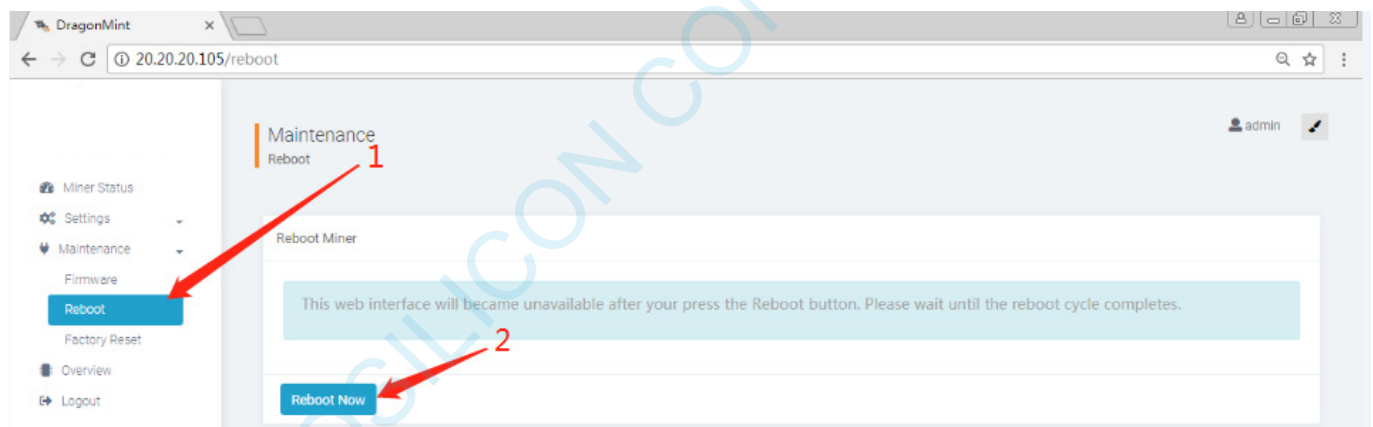
3.5.2 UPGRADE



3.5.3 MODIFY THE PASSWORD



3.5.4 REBOOT



3.5.5 FACTORY RESET

