

INNOSILICON

T2T-24T BTC USER MANUAL



Table of Contents

1. OVERVIEW	1
2. ASSEMBLE THE MINER	2
2.1 Check the miner before power on	2
2.2 Connect the PSU	3
3. OPERATE THE MINER	4
3.1 Enter the miner console	4
3.2 Set up the pool	4
3.3 Check the hashrate of the miner	5
3.4 Network configuration	5
3.5 Other pages	6
3.5.1 Overview	6
3.5.2 Upgrade	6
3.5.3 Modify the password	7
3.5.4 Reboot	7
3.5.5 Factory reset	7

1. OVERVIEW



Part Number	T2T-24T
Algorithm	Sha256
Size (L×W×H)	408mm(L)*135mm(W)*232mm(H)
Net Weight	8.82KG (with PSU)
Operating Temperature	0-40 ℃
Network Connection	Ethernet

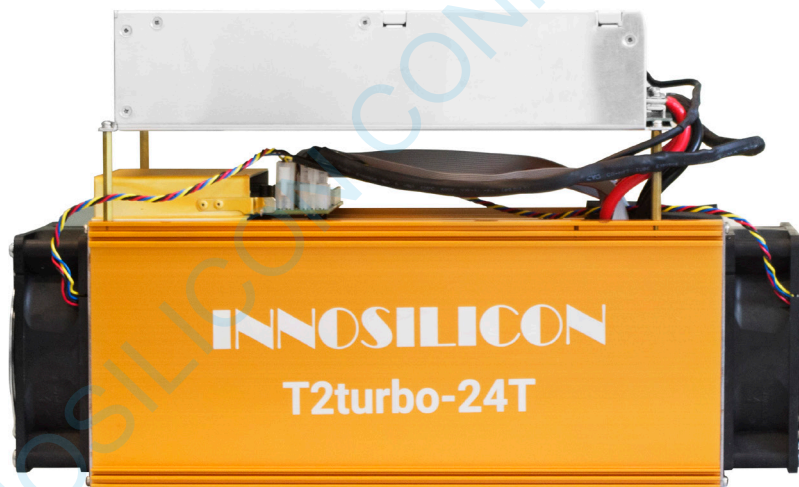
Typical Hashrate and Power Dissipation of the Four Mode: You can set the mode follow the manual 3.5.1)

Mode	Performance	Factory	Balance	Efficient
Hashrate	24TH±5%	22TH±5%	20TH±5%	18TH±5%
Power dissipation	1980+10%	1760W+10%	1530W+10%	1240W+10%

2. ASSEMBLE THE MINER

2.1 CHECK THE MINER BEFORE POWER ON

- Check the warranty sticker is well or not, especially the hashboards PSU port side. If the warranty sticker is damaged when you received the miner, please contact our After-sales.
- Before you power on the miner, shake the miner softly, if you can hear the sound of metal banging on metal, please contact our After-sales.
- Check if the fan work well, if you find the fans broken please contact our After-sales.
- The cable connection should be same as the follow picture.



Note:

There is a led on each hashboard, which can show the work status of the hashbaord.

When the miner start to work, the led

Solid---workig well

Blink---the hashboard overheat, please check the fans of the miner and the room temp

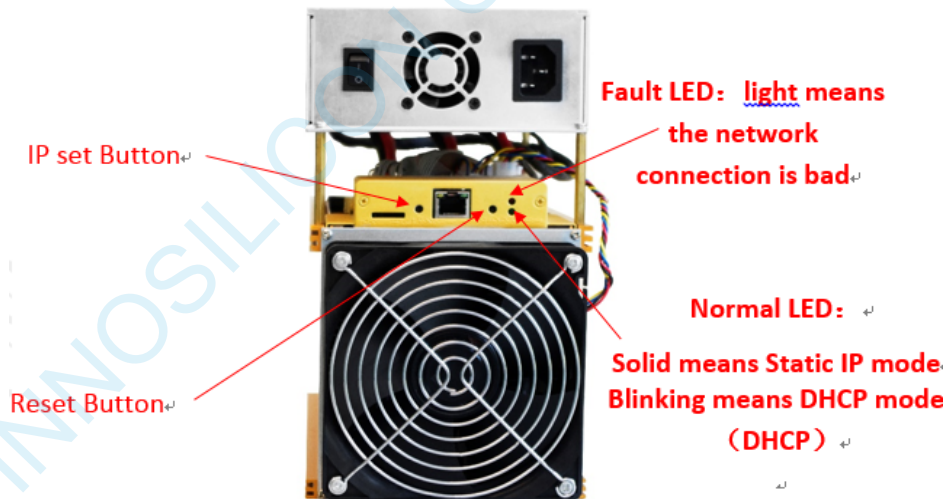
Off---the hashboard don't work, please try to reboot the miner or change the data cable. You can contact our after-sales team if the problem is still exist.

2.2 CONNECT THE PSU

Note: The sequence of the PSU cable should be same with the follow picture. Change the sequence of the PSU cable will void the warranty.



Connect the miner and the router by the Ethernet cable, then the miner can start to run after power on the miner.



IP SET button:

Press it 1—4 seconds, it will (1) show the IP of the miner in the “Set IP” tool; (2) change the miner to Static IP mode and modify the IP to the IP range you set in the “Set IP” tool

Press it 4—15 seconds, the miner will become to DHCP and the settings of the miner should be restore to default.

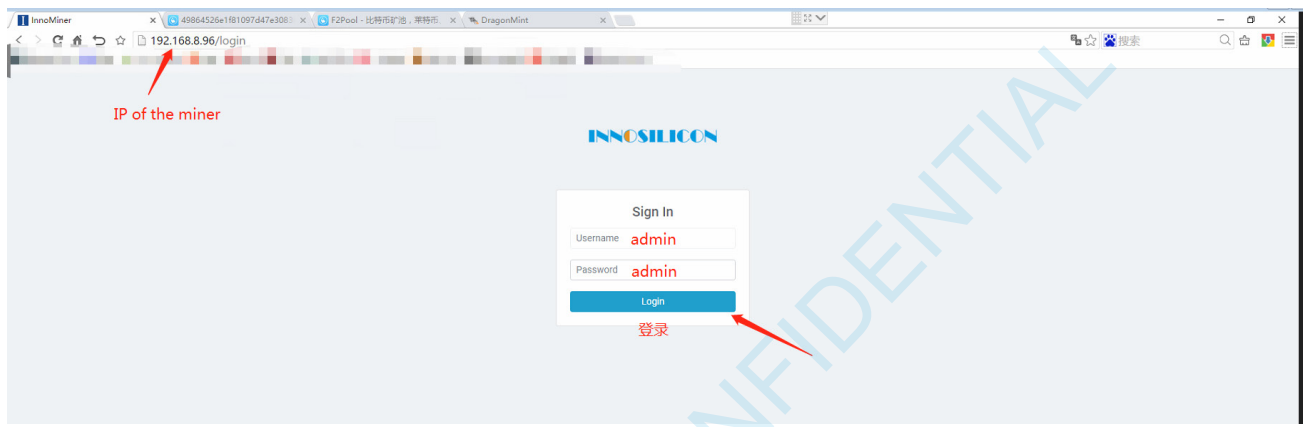
Press it more than 20 seconds to switch the Dynamic (Static) IP to Static (Dynamic)

RESET button: Your miner will restart if you press it..

3. OPERATE THE MINER

3.1 ENTER THE MINER CONSOLE

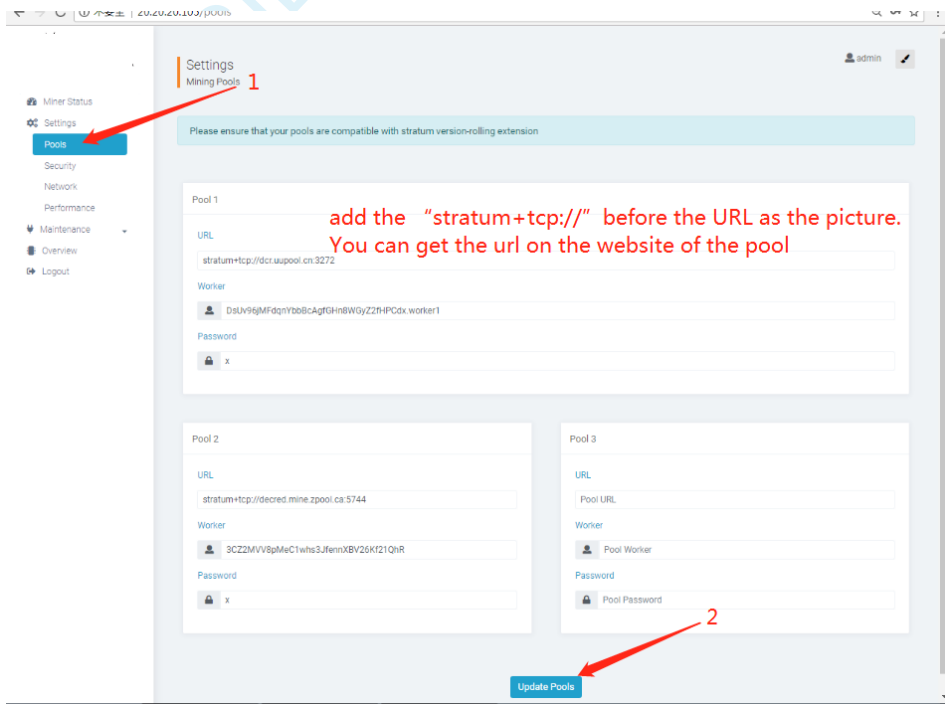
DHCP(the Normal led on the control board should be blinking) is the default IP mode of the miner, find the IP via the router or the IP scanner. Enter the IP of the miner on the browser and press the Enter button. The chrome is the suggested browser.



3.2 SET UP THE POOL

- Please use the suggested pool as below:
- 1 ckpool: cn.ckpool.org:443 or pool.ckpool.org:3333
 - 2 slushpool: stratum.slushpool.com:3333
 - 3 f2pool: btc-65536.f2pool.com:3333

- 4 btc.top: t2.btc.top:8888 or bak.t2.btc.top:3333
- 5 poolin: stratum+tcp://btc-bj.ss.poolin.com:1800
or stratum+tcp://btc-sz.ss.poolin.com:1800
- 6 bitfury: hashrate of the pool maybe low.



3.3 CHECK THE HASHRATE OF THE MINER

After set up the pool, the miner will mine for you.

Miner Status
Live Data (auto-refresh)

Please note the miner is autotuning, hashrate may vary until completion!

50m up time | 99.9% (1539/1) accepted rate

2.35 TH/s hash rate | 100% fan speed

hashrate graph

the using pool

#	Pool	User	Status	Get Works	Accepted / Rejected
1	stratum-tcp://dcr.uupool.cn:3272	DslUv96jMFdqnybbBcAgfGHnsWgyZ2fHPDcx.worker1	Alive	27	1539/1
2	stratum-tcp://decred.mine.zpool.ca:5744	3C2ZMVV8pMeC1whs3JfemXBV26Kf21QhR	Dead	0	0/0

hashrate of per hashboard

#	Hash Rate	Status	Accepted	Rejected	HW	Temperature
1	784.79 GH/s	Alive	474/0		3	63 °C
2	784.79 GH/s	Alive	519/1		1	63 °C
3	785.34 GH/s	Alive	546/0		5	61 °C

3.4 NETWORK CONFIGURATION

Settings
Network

Network Settings

if you want to use the static IP, please click here unselect the DHCP

DHCP Please check this box if you want the miner to receive an IP address automatically from your DHCP server.

IP: 20.20.20.105

Netmask: 255.255.255.0

Gateway: 20.20.20.1

DNS 1: 208.67.222.222

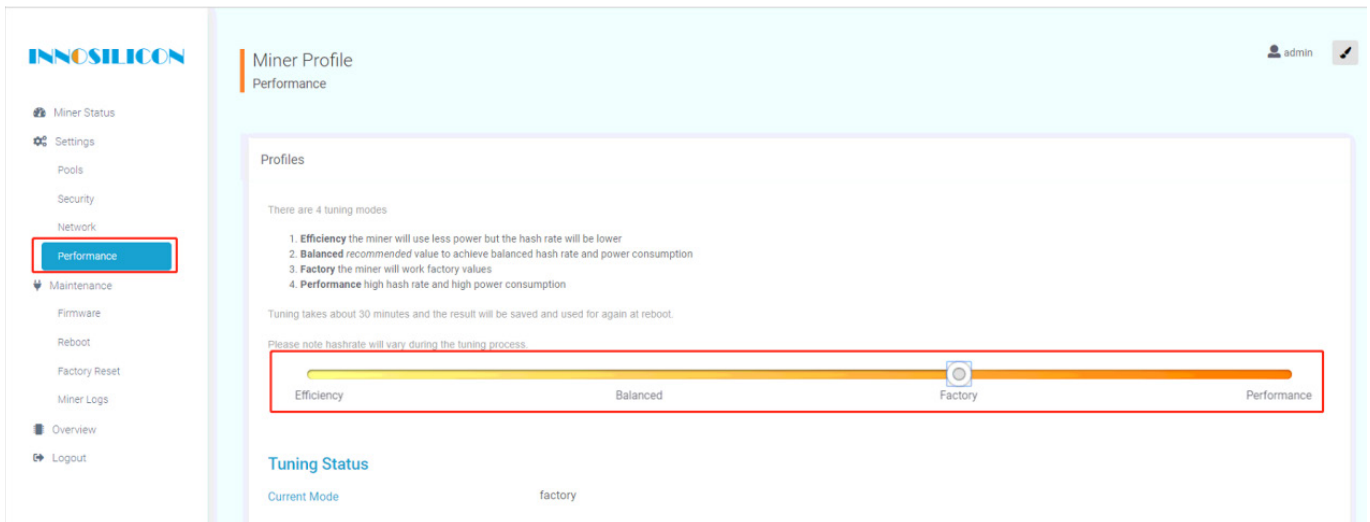
DNS 2: Name Server 2

Update

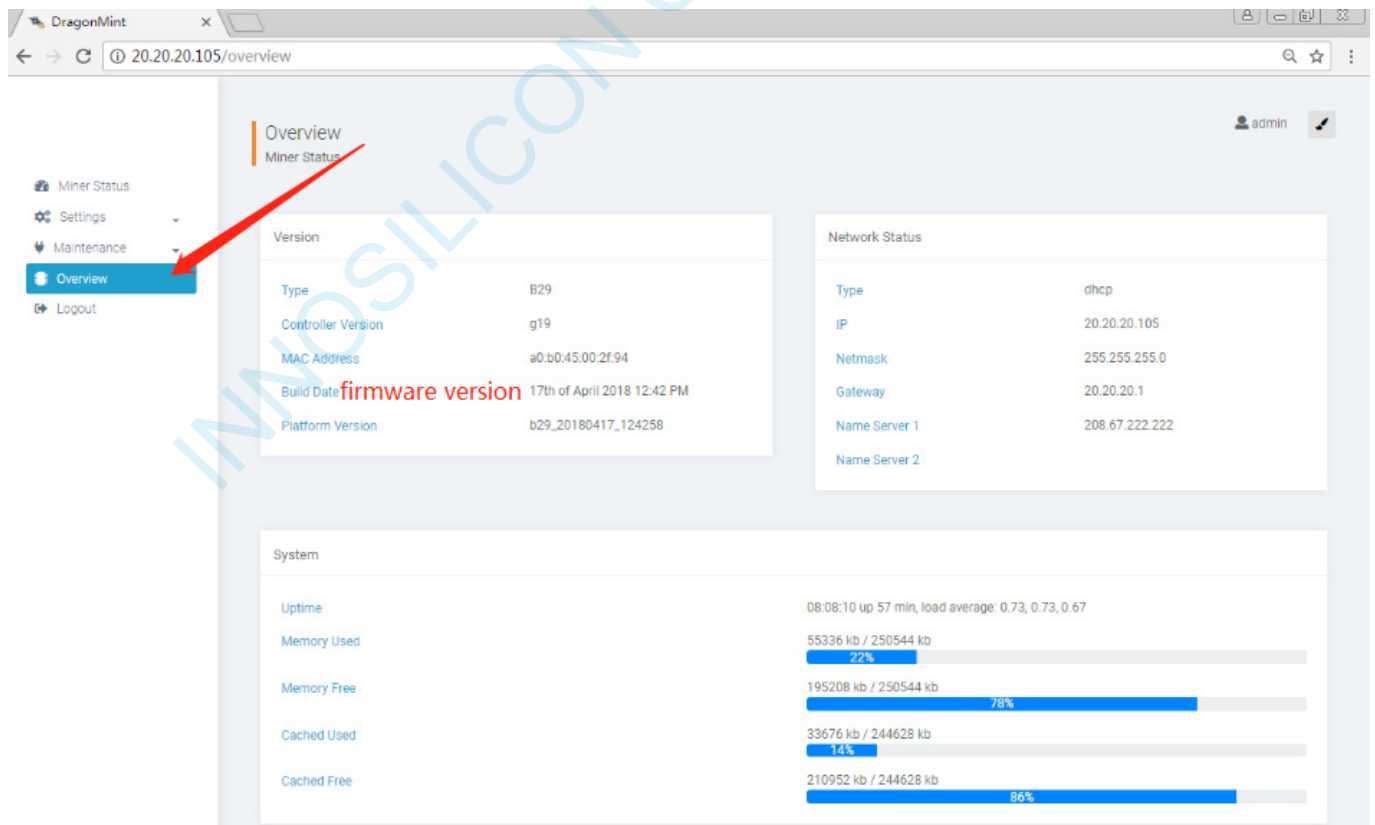
3.5 OTHER PAGES

3.5.1 CHANGE THE OPERATE MODE

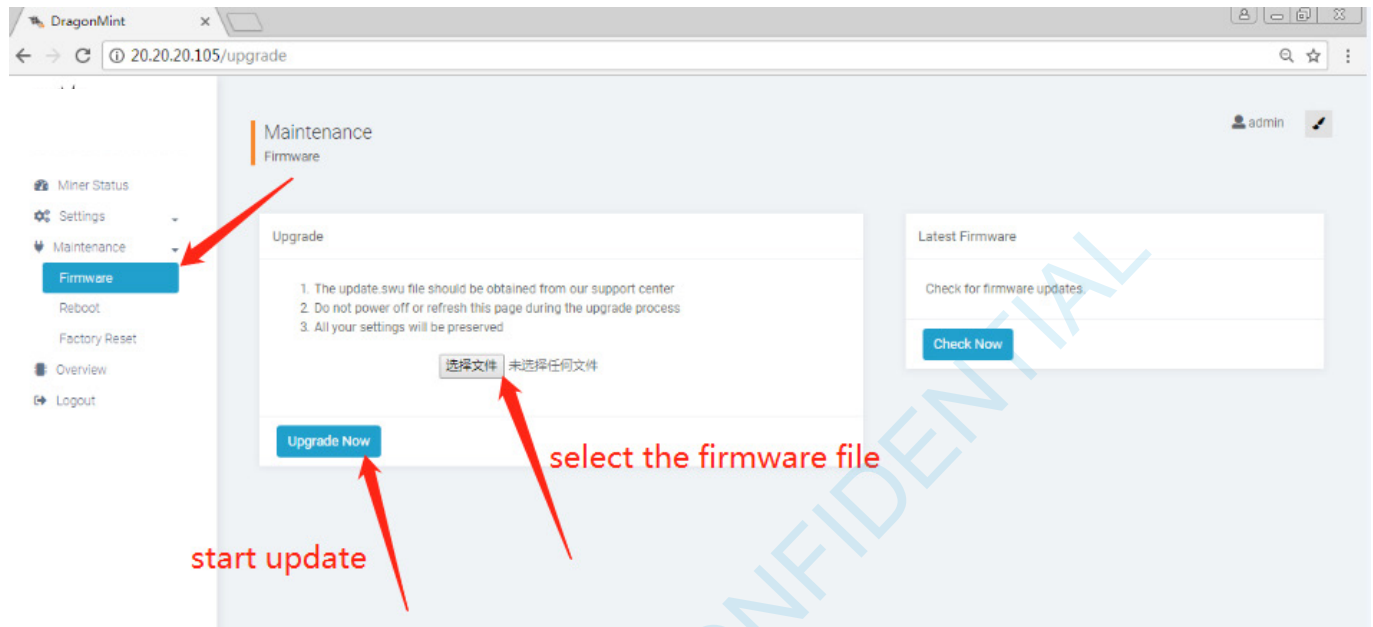
There are 4 modes can be choosed, please click the “Save” after you set the mode.



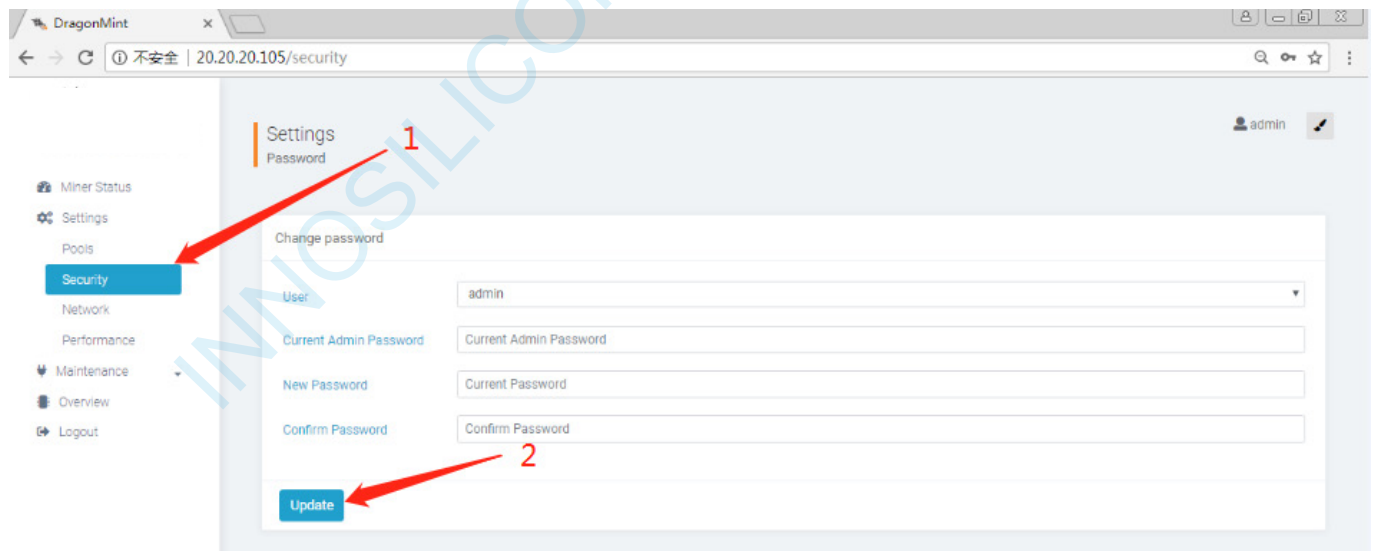
3.5.2 OVERVIEW



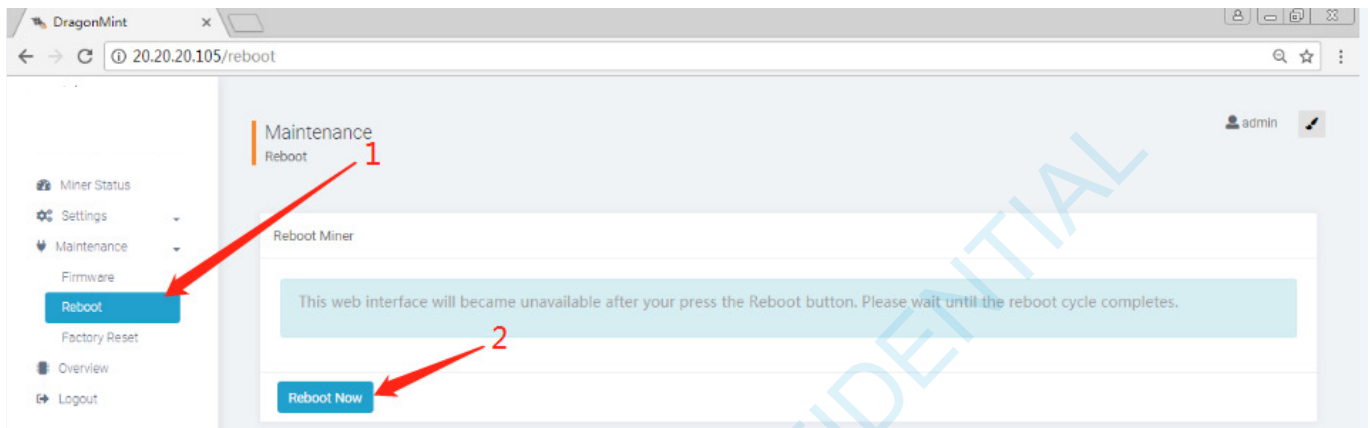
3.5.3 UPGRADE



3.5.4 MODIFY THE PASSWORD



3.5.4 REBOOT



3.5.5 FACTORY RESET

