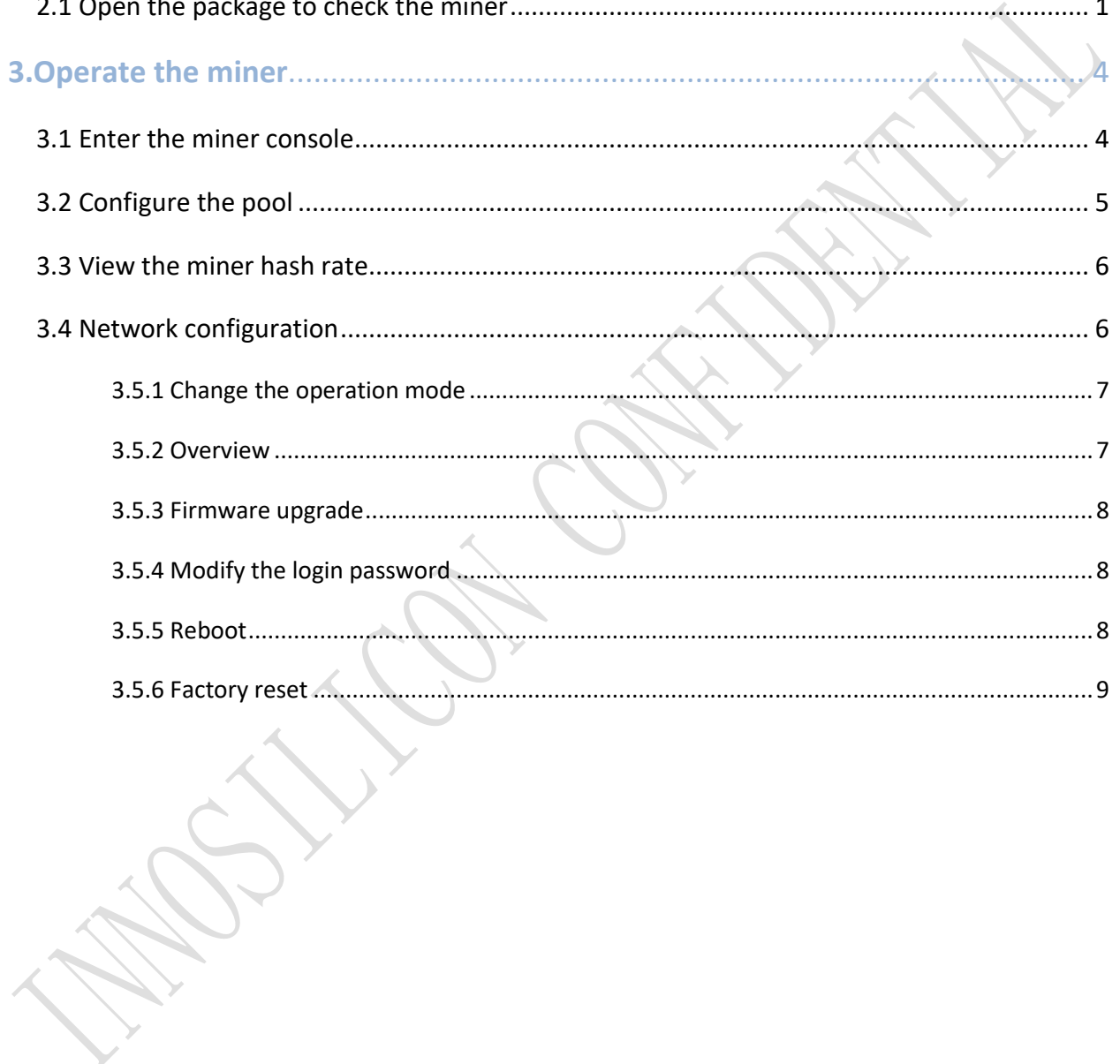


INNOSILICON

T2TS-26T BTC USER MANUAL



1.Overview	0
2. Assemble the miner	1
2.1 Open the package to check the miner	1
3.Operate the miner.....	4
3.1 Enter the miner console.....	4
3.2 Configure the pool	5
3.3 View the miner hash rate.....	6
3.4 Network configuration.....	6
3.5.1 Change the operation mode	7
3.5.2 Overview	7
3.5.3 Firmware upgrade.....	8
3.5.4 Modify the login password	8
3.5.5 Reboot.....	8
3.5.6 Factory reset	9



1.Overview



Specifications

Part Number	T2TS-26T
Algorithm	Sha256
Size (L×W×H)	422mm(L)*142mm(W)*201mm (H)
Net Weight	9.06KG
Operating Temperature	0--40 °C(device junction temperature)
Network Connection	Ethernet

Typical Hash rate and Power Dissipation parameters under the four Modes: (Pls refer to 3.5.1 in the manual for mode modification)

Mode	Performance	Factory	Balance	Efficient
Hash rate	26T±5%	24TH±5%	22TH±5%	21TH±5%
Power dissipation	2100W+10%	1950W+10%	1600W+10%	1410W+10%

2. Assemble the miner

2.1 Open the package to check the miner

- Check whether the warranty sticker is damaged, especially the one on hash boards PSU port side. If the warranty sticker is damaged when you receive the miner, please contact our after-sales personnel in time.
- Before assembling the miner, pls shake the miner gently. Please contact our after-sales personnel immediately if there is metallic collision sound.
- Check if the fan works well, if you find the fans broken please contact our after-sales personnel.
- The wiring of the miner shall not be changed.



Notes:

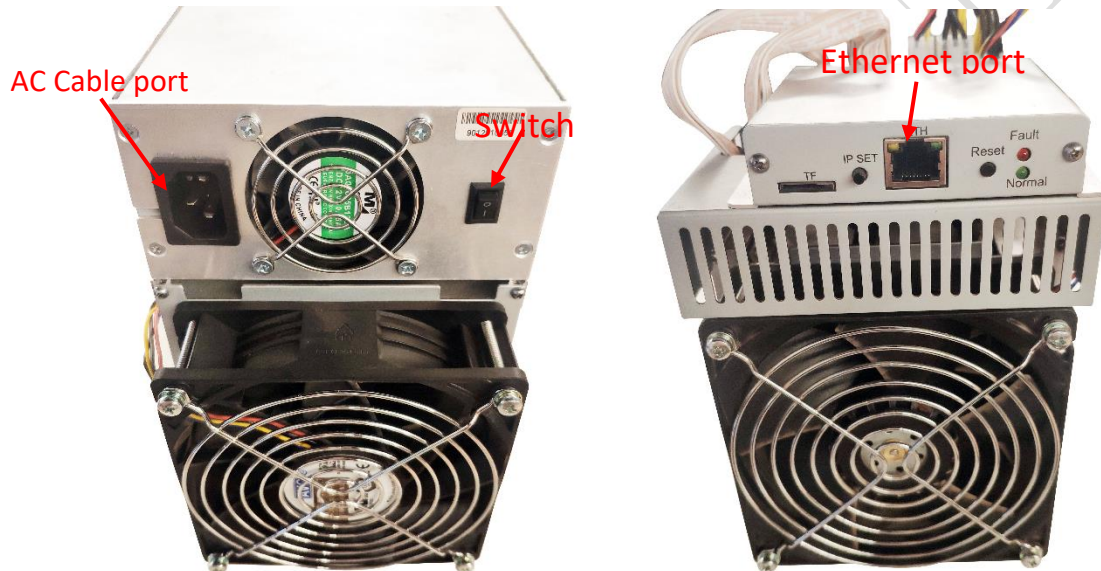
There is an indicator on each hash board which shows the work status of the hash board. Being constantly lit means the hash board works properly. Flickering represents overtemperature of the hash board. Please check the fans of the miner, environment temperature and the ventilation conditions.

Being off means the hash board doesn't work. Please try to reboot the miner or change the data cable. Pls contact our after-sales team if the problem still exists.

2.2 Assemble & Operate

Connect the miner and the router by the Ethernet cable and then the miner can start to run after being powered on.

Notes: T2TS-26T miners consume much more power under some modes. Pls choose proper sockets.



Normal Indicator: Being constantly lit represents static IP and flickering represents DHCP

Fault Indicator: Being on means there is something wrong with the network; Being off means it is OK.

IP SET button:

Press it for 1 to 4 seconds and the following functions can be realized:

- (1) Sending the IP miner to the "Set IP" tool;
- (2) Changing the miner to a Static IP within the specific range with the IPset tool

Press it for 4 to 15 seconds, the miner IP will be switched to DHCP and the pool settings will be restored to default settings.

Press it for 15 to 30 seconds to switch the Dynamic (Static) IP to Static (Dynamic).

RESET button: Press the “Reset” button to restart the miner.

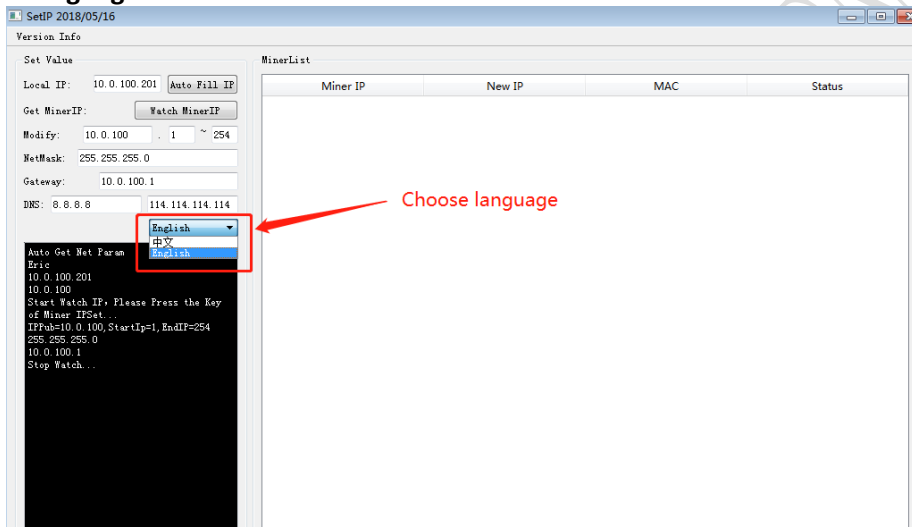
INNOSILICON CONFIDENTIAL

3. Operate the miner

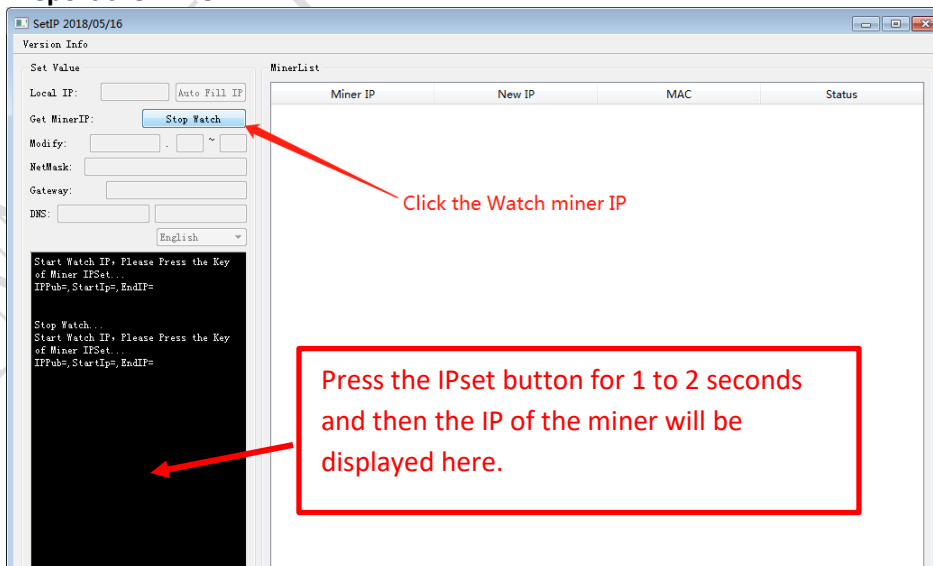
3.1 Enter the miner console

DHCP is the default IP mode of the miner (The normal indicator of the control board now is flickering in green when the DHCP service of the router is enabled.). Find the IP via the IP scanner or the SetIP tool developed by our company. Pls refer to the official support center for the downloading address https://www.innosilicon.com/html/support_en/tool.html.

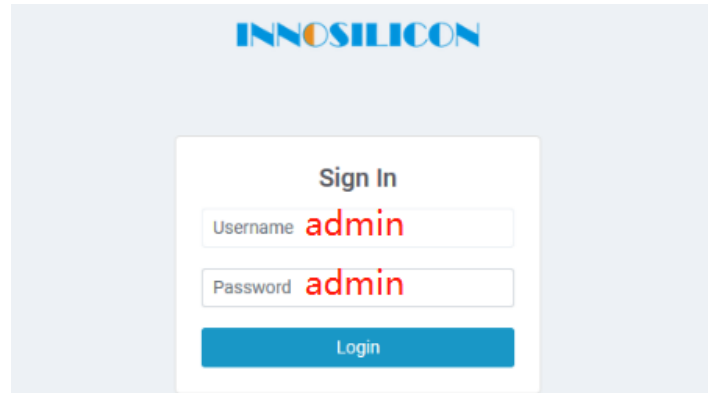
a. Save SetIP in the pc on the same network with the miner, then double click the tool and choose the language.



b. Report the miner IP



Enter the IP of the miner in the browser and press the Enter button to go to the miner console page. Chrome is the suggested browser. (Please try with dragonadmin if the password admin is invalid.)



3.2 Configure the pool

Pls configure the pool to start mining after login.

Please use the suggested pool as below:

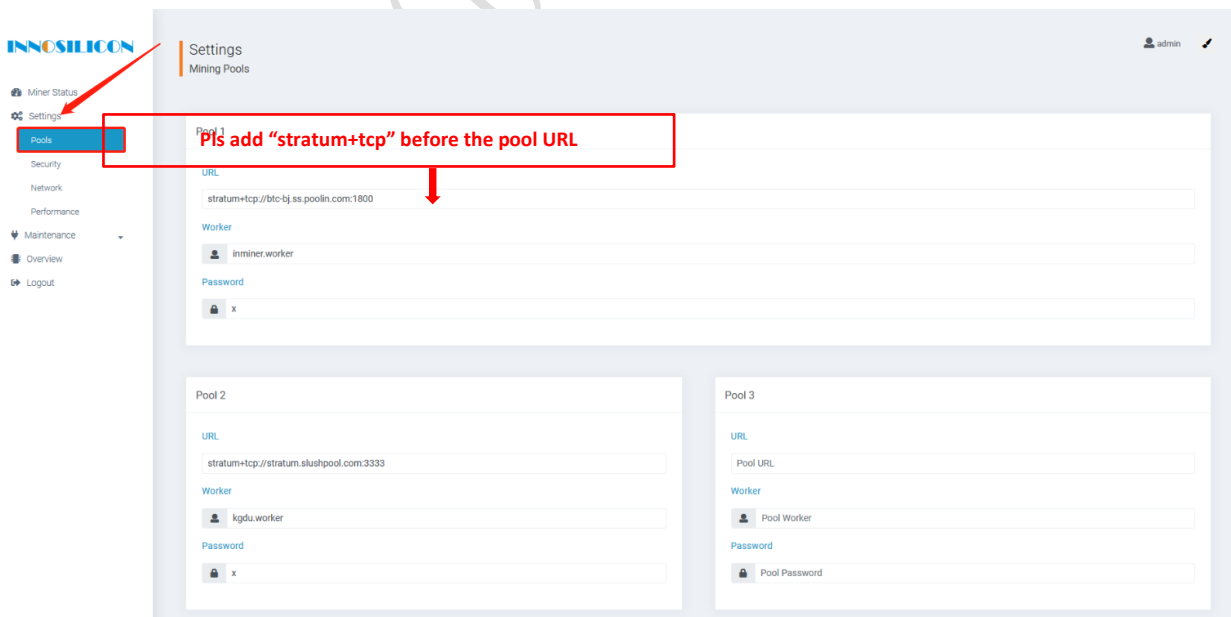
1 f2pool: stratum+tcp://btc-65536.f2pool.com:3333

2 poolin: stratum+tcp://btc-bj.ss.poolin.com:1800 or stratum+tcp://btc-sz.ss.poolin.com:1800

3 ckpool: stratum+tcp://cn.ckpool.org:443 or stratum+tcp://pool.ckpool.org:3333

4 btc.top: stratum+tcp://t2.btc.top:8888 or stratum+tcp://bak.t2.btc.top:3333

5 slushpool: stratum+tcp://stratum.slushpool.com:3333



3.3 View the miner hash rate

After configuring the pool, the miner will mine for you. You can view the hash rate in the Miner Status screen.

The screenshot shows the Miner Status dashboard with the following components:

- Miner Status Summary:** 90m up time, 99.9% (1539/1) accepted rate, 2.35 TH/s hash rate, and 100% fan speed.
- hashrate graph:** A line graph showing hash rate over time for Chain 1, Chain 2, Chain 3, and Total. The Total hash rate is highlighted with a red box and labeled "hashrate graph".
- Pools Table:** A table listing active and dead pools.
- Miner Info Table:** A table showing hash rate, status, accepted/rejected counts, HW, and temperature for each miner.

#	Pool	User	Status	Get Works	Accepted / Rejected
1	stratum-tcp://dcr1.u.pool.cn:3272	DsLvr96jMFdqnYbb8cAgfGHn8WgyZ2rHPDdx.worker1	Alive	27	1539/1
2	stratum-tcp://decred.mine.zpool.ca:5744	8C23MvV8pMc1whs3JfemXBV26Kf21QHR	Dead	0	0/0

#	Hash Rate	Status	Accepted	Rejected	HW	Temperature
1	784.79 GH/s	Alive	474/0		3	63 °C
2	784.79 GH/s	Alive	519/1		1	63 °C
3	785.34 GH/s	Alive	546/0		5	61 °C

3.4 Network configuration

The screenshot shows the Network Settings page with the following configuration:

- Network Settings:** DHCP is checked. A red box highlights the checkbox with the text "if you want to use the static IP, please click here unselect the DHCP".
- IP:** 20.20.20.105
- Netmask:** 255.255.255.0
- Gateway:** 20.20.20.1
- DNS 1:** 208.67.222.222
- DNS 2:** Name Server 2
- Update:** A red arrow points to the Update button.

Annotations:

- 1: Points to the Network menu item in the sidebar.
- 2: Points to the Update button.

3.5 Other pages

3.5.1 Change the operation mode

There are 4 modes available and please click the “Save” icon after your modification.

Miner Profile Performance

There are 4 tuning modes

1. **Efficiency** the miner will use less power but the hash rate will be lower
2. **Balanced** recommended value to achieve balanced hash rate and power consumption
3. **Factory** the miner will work factory values
4. **Performance** high hash rate and high power consumption

Tuning takes about 30 minutes and the result will be saved and used for again at reboot.

Please note hashrate will vary during the tuning process.

Efficiency Balanced Factory Performance

Tuning Status

Current Mode: factory

Tuning Status: tuned

Save

3.5.2 Overview

Overview

Version

Type	B29
Controller Version	g19
MAC Address	a0:b0:45:00:2f:94
Build Date	17th of April 2018 12:42 PM
Platform Version	b29_20180417_124258

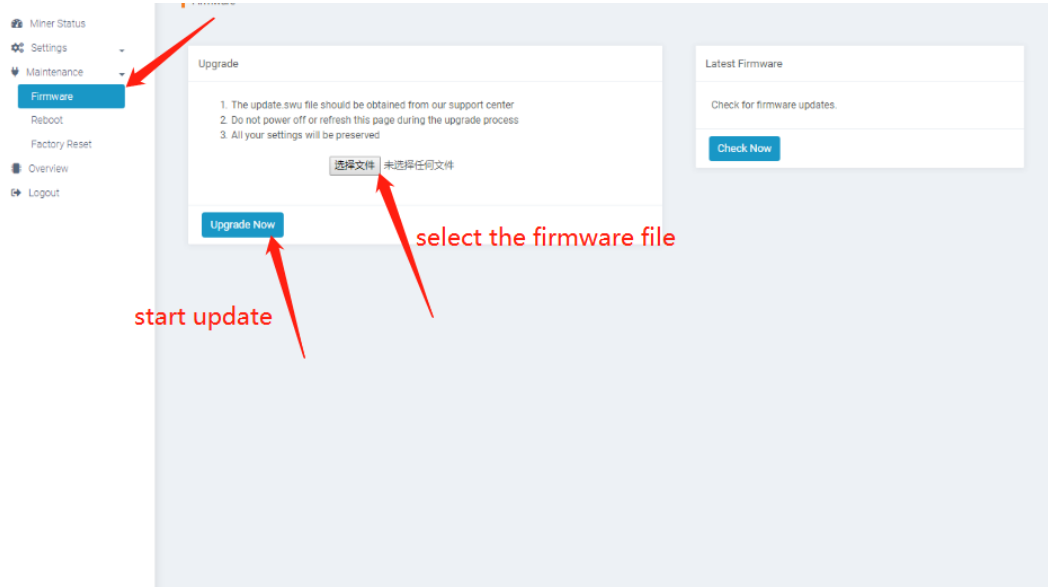
Network Status

Type	dhcp
IP	20.20.20.105
Netmask	255.255.255.0
Gateway	20.20.20.1
Name Server 1	208.67.222.222
Name Server 2	

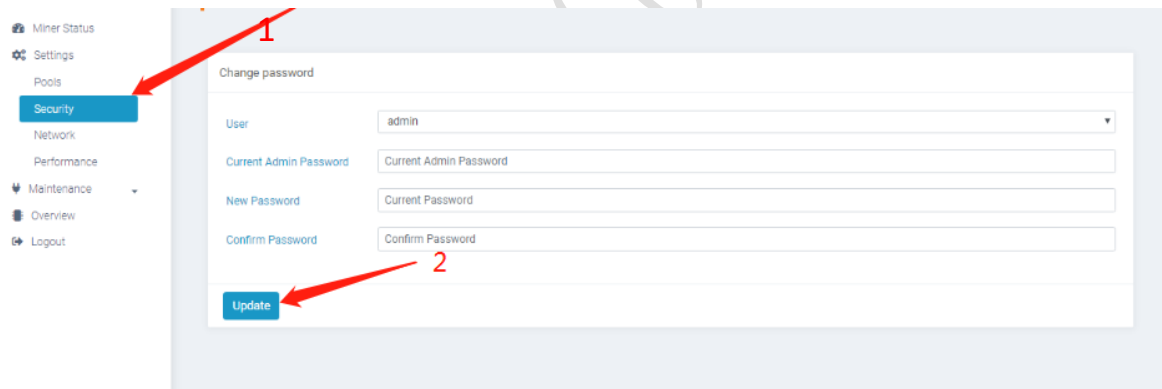
System

Uptime	08:08:10 up 57 min, load average: 0.73, 0.73, 0.67
Memory Used	55336 kb / 250544 kb 22%
Memory Free	195208 kb / 250544 kb 78%
Cached Used	33676 kb / 244628 kb 14%
Cached Free	210952 kb / 244628 kb 86%

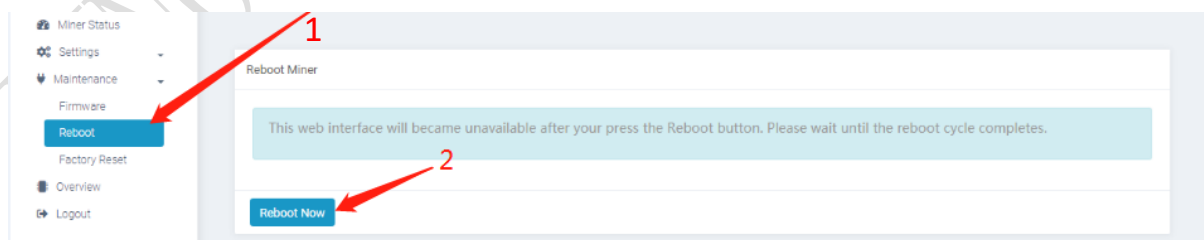
3.5.3 Firmware upgrade



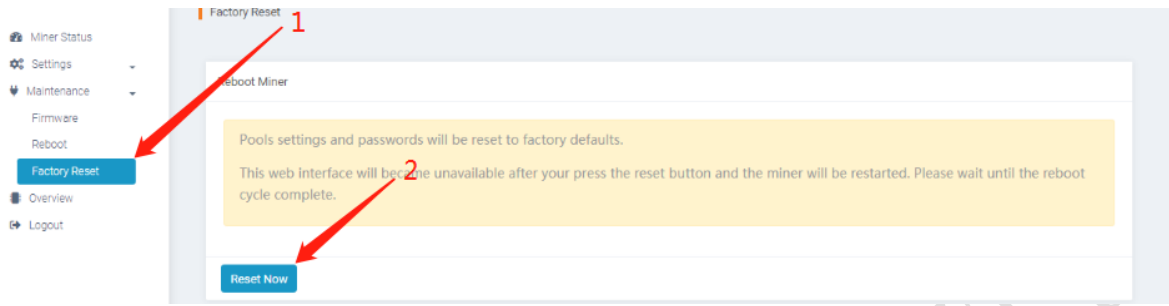
3.5.4 Modify the login password



3.5.5 Reboot



3.5.6 Factory reset



INNOSILICON CONFIDENTIAL